



This work has been submitted to NECTAR, the
**Northampton Electronic Collection of Theses and
Research.**

<http://nectar.northampton.ac.uk/3974/>

Creator(s): Field, M.

Title: What is cohousing?

Date: 2011

Originally presented to: Confederation of Co-operative Housing (CCH)
18th Annual Conference: Business Not As Usual?

Conference URL: <http://www.cch.coop/events/conf2011.html>

Example citation: Field, M. (2011) What is cohousing? Invited
Presentation presented to: *Confederation of Co-operative Housing (CCH)
18th Annual Conference: Business Not As Usual?, University of Warwick,
22-24 July 2011.*

Version of item: Presented version

Confederation of Co-operative Housing [Conference, 2011]

What is Cohousing ?

23 July 2011

Dr. Martin Field

Institute for Urban Affairs, Northampton /

UK Cohousing Network

martin.field99@gmail.com

The role of Cohousing in developing "mutual" neighbourhoods

Content of presentation :

- to note the current interest in "mutual" housing
- to clarify Cohousing's essential characteristics
- to note sources of information on Cohousing
- to look at UK Cohousing initiatives
- a look at promoting opportunities for Cohousing
- liaison between academic and housing sectors

Cohousing and "mutual" neighbourhoods

- The current interest in "mutual" housing
 - Commission on Co-operative & Mutual Housing
 - Mutual Housing Sector Group & finance
 - National Community Land Trust Network
 - DCLG 'Self Build' Action Plan (July 2011)

Cohousing and "mutual" neighbourhoods

**INSIDE
HOUSING**

Wednesday, 30 March 2011



Co-housing schemes are a great way to build stronger communities and are becoming ever more popular, says Bill Randall

Joining forces

25/03/2011

Cohousing and "mutual" neighbourhoods

- Cohousing's key

..an 'intentional neighbourhood', in which the local residents craft and live out their own vision for private and shared spaces....

Cohousing and "mutual" neighbourhoods

- Cohousing's essential characteristics
 1. Combination of private & communal space
 2. Designed for social interaction
 3. A focus upon sustainable dynamics
 4. Resident-led decision-making

Cohousing and "mutual" neighbourhoods

1. Combination of private & communal space

- self-contained accommodation
- private and common garden areas
- common /shared facilities (laundry, hobbies, workspace, guests)
- common 'house' / dining facilities



Place : Amherst, Mass., US



Place : Amherst, Mass., US



Place : Amherst, Mass., US



Place : Common House, Amherst, Mass., US



Place : Common House, Amherst, Mass., US



Place : Cambridge, Mass., US



Place : Cambridge, Mass., US

Place : Cambridge,
Mass., US





Place : Common facilities, Cambridge, Mass., US



Place : Common facilities, Cambridge, Mass, US

Place : Common parking,
Cambridge, Mass., US



Cohousing and "mutual" neighbourhoods

2. Designed for social interaction

- intentional and incidental contact
- vehicle-free, pedestrian-friendly
- deliberate juxtaposition of homes and facilities
- integration of common space(s)



Place : Cambridge, Mass, US



Place : Jydstrup, Denmark



Place : Jydstrup, Denmark



Place : Jydstrup, Denmark



Place : Jydstrup, Denmark

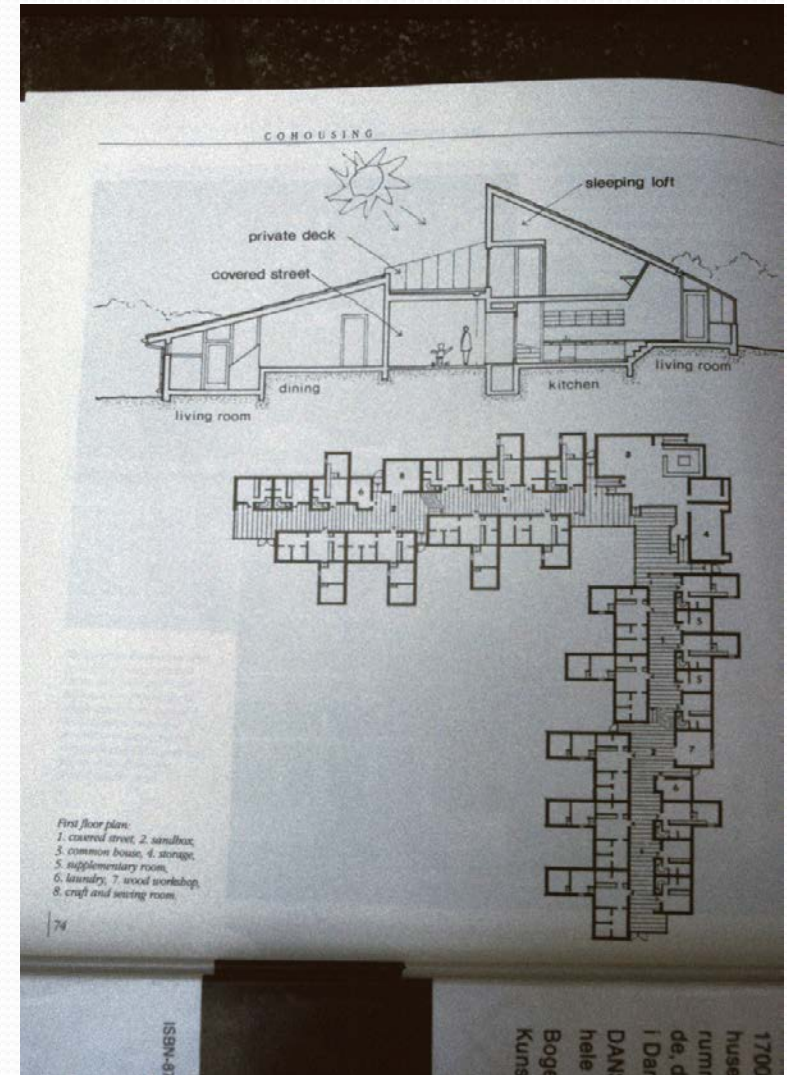


Place : Greater Copenhagen, Denmark

Cohousing and "mutual" neighbourhoods

3. A focus upon sustainable dynamics

- size and scale to support personal relationships
- not too big, nor too small
- Danish guide : 10 - 40 adults
- more than 1 scheme in larger neighbourhoods
- inter-generational combinations



Place : Jydstrup, Denmark

Cohousing and "mutual" neighbourhoods

4. Resident-led decision-making

- legal structures for common ownership
- management of all design & development stages
- long-term neighbourhood management
- self-determined policies: standards, funds, 'work time', successions, eco-values, *et al*



Place : Community Project, East Sussex

Cohousing and "mutual" neighbourhoods

- Key sources of Cohousing information

<http://www.cohousing.org.uk>

<http://www.cohousing.org> (US network)

<https://www.edgeoftime.co.uk>

<http://www.mccamant-durrett.com>

<http://www.ecoarc.co.uk>

2011 : 'Cohousing – a Diggers & Dreamers Review'

Cohousing and "mutual" neighbourhoods

- Examples of UK cohousing schemes:

CoHousing *before* 'Cohousing'
Community Project, East Sussex
Springhill, Stroud
Threshold Centre , Cole Street Farm
Halton, Lancaster
OWCH, London; Lilac Project, Leeds

Thundercliffe Grange, Yorkshire



Cannon Frome, Herefords.





Community Project, Laughton, East Sussex



Community Project, Laughton, East Sussex



Community Project, Laughton, East Sussex



Community Project, Laughton, East Sussex



Community Project, Laughton, East Sussex



Community facilities, Laughton, East Sussex

Self build properties, Community Project, Laughton, East Sussex





Springhill, Stroud



Springhill, Stroud

Springhill, Stroud





Springhill, Stroud

Springhill, Stroud



Common House, Springhill, Stroud





Common House, Springhill, Stroud



Common House, Springhill, Stroud

Springhill, Stroud



Springhill, Stroud

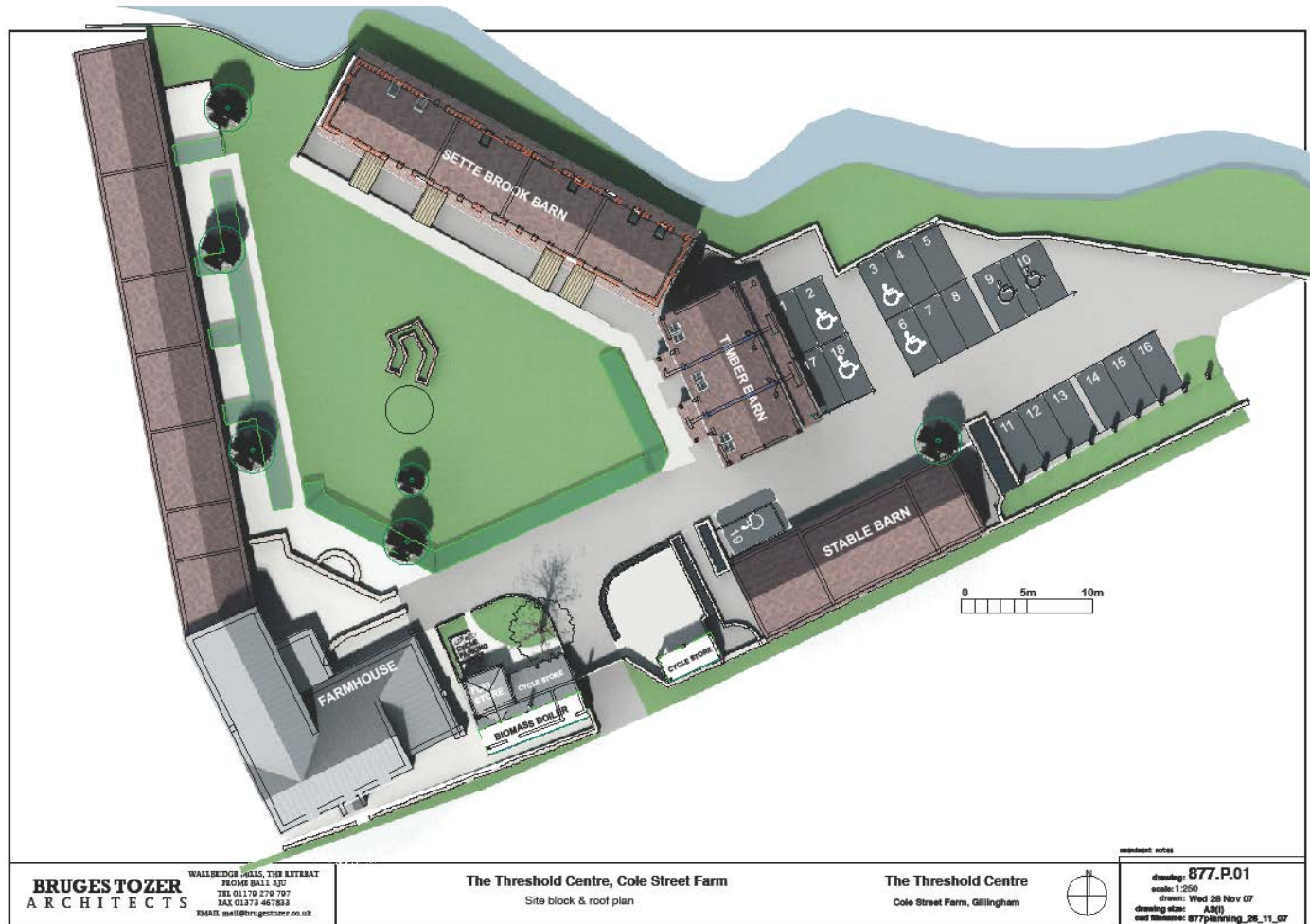




The Threshold Centre, Gillingham, Dorset



The Threshold Centre, Gillingham, Dorset



The Threshold Centre, Gillingham, Dorset



The Threshold Centre, Gillingham, Dorset



The Threshold Centre, Gillingham, Dorset



The Threshold Centre, Gillingham, Dorset



The Threshold Centre, Gillingham, Dorset



Forge Bank, Lancaster

Ecological Cohousing Project Forge Bank Halton



Artist Impression

note! Some riverside trees omitted from artists impression to give full view of development proposals



date: 24th March 2010
scale: not to scale
drawn: A104
scale: 1:1000
CD

Copyright © 2010 ecoarc

PROJECT:
Ecological Cohousing
Project Forge Bank
Halton
DRAWING:
AS PROPOSED DRAWING
Artist Impression

Forge Bank, Lancaster

Ecological Cohousing Project; Forge Bank, Halton



Forge Bank, Lancaster

Ecological Cohousing Project; Forge Bank, Halton



South Elevation

Terrace F_26-29_Elevations



Work Stage D Planning Application Drawing



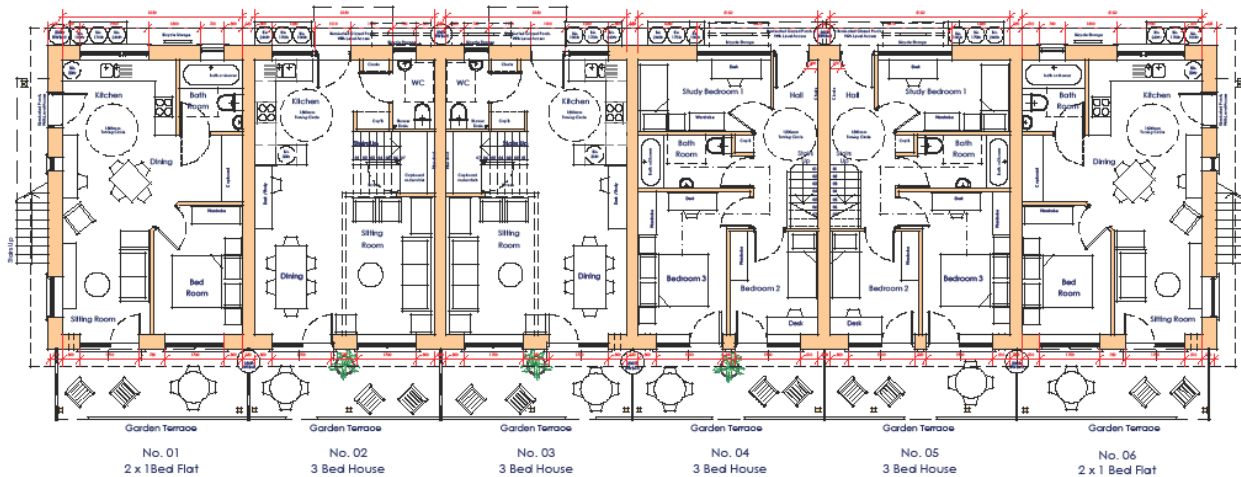
REVISIONS
A 14th Apr 2010: Roof height amended & PV area adjusted accordingly.

DATE: 14th April 2010
DRAWN: 1.008/AJ.L.1008/A3
CHECKED: 151 Rev A now check D
No further drawings are to be submitted in relation to this project.
Copyright is reserved by the client.

PROJECT:
Ecological Cohousing Project
Forge Bank,
Project:
Drawing:
Halton
Elevations

Forge Bank, Lancaster

Ecological Cohousing Project; Forge Bank, Halton



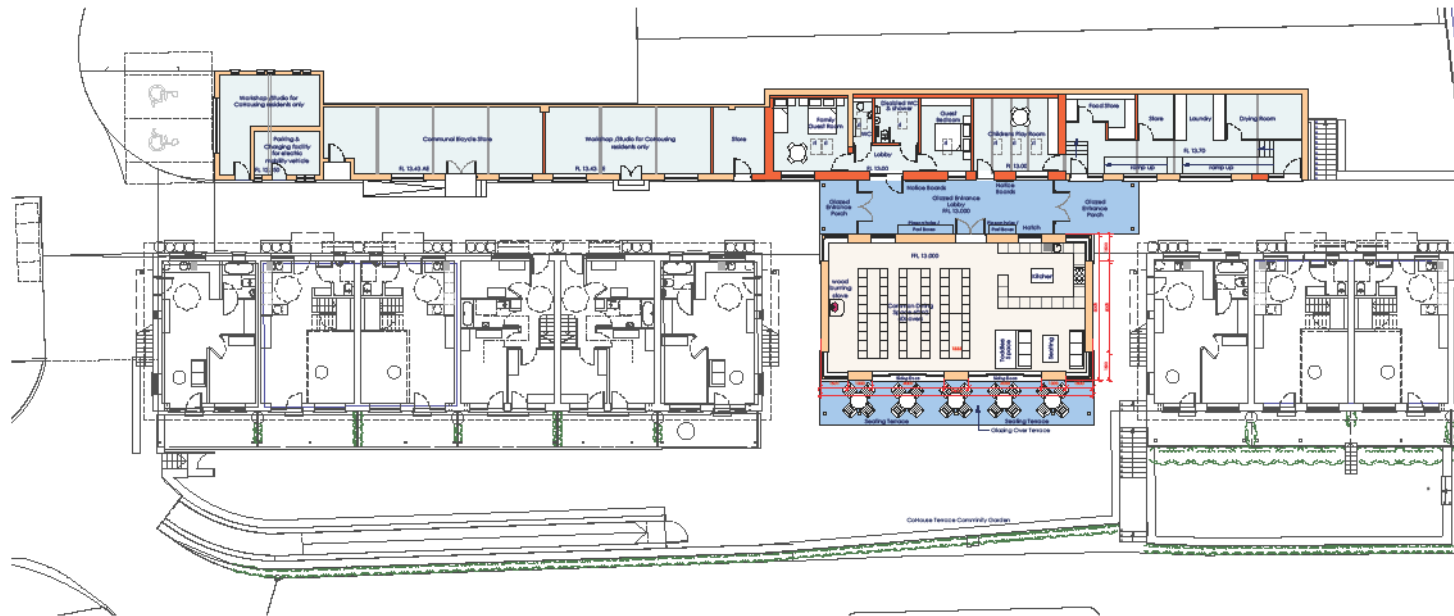
Terrace A_01-06_Ground Floor Plan

Work Stage D Planning Application Drawing



Forge Bank, Lancaster

Ecological Cohousing Project; Forge Bank, Halton



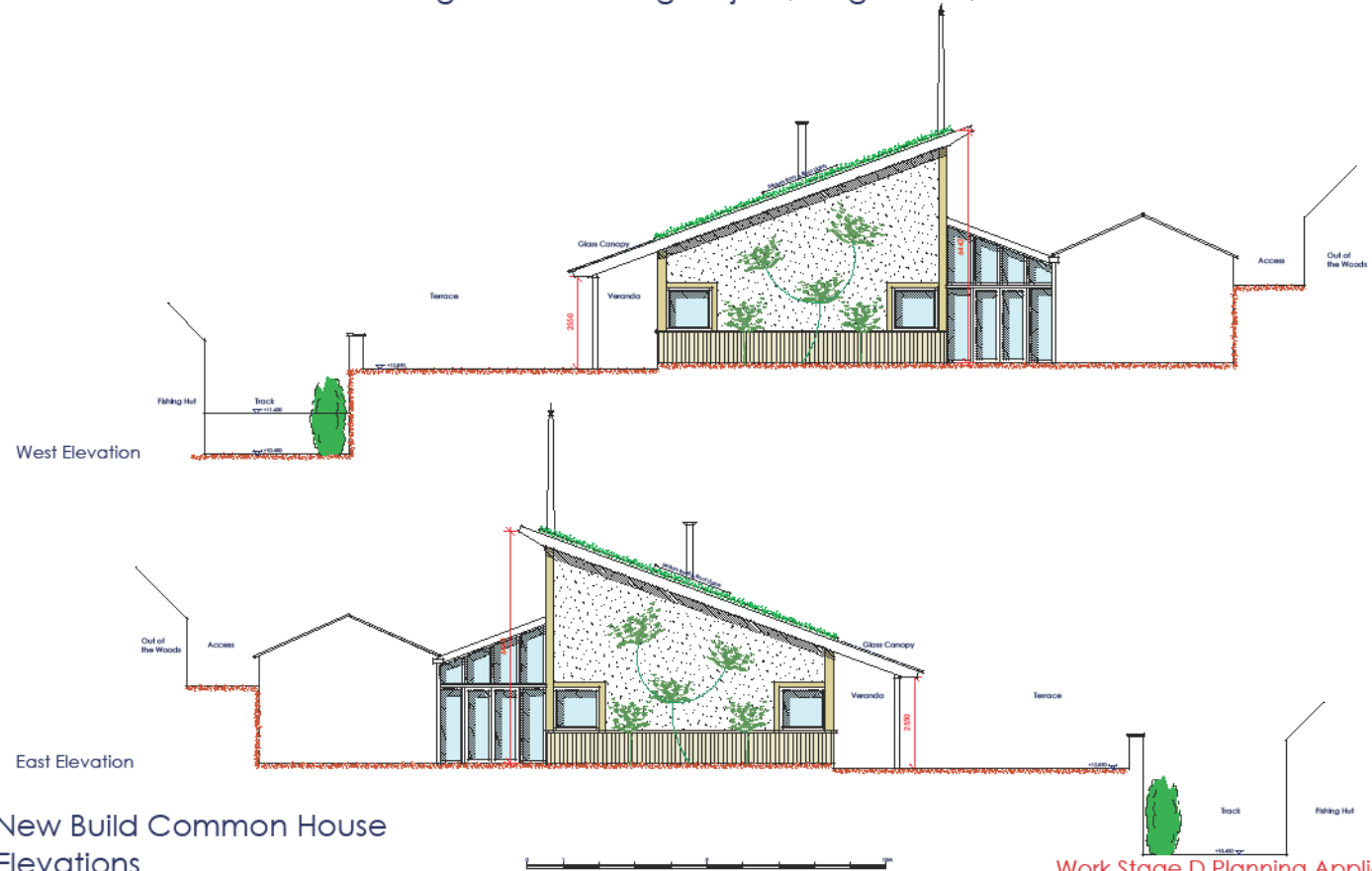
Communal Buildings
New Build Common House

Work Stage D Detailed Design

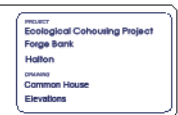


Forge Bank, Lancaster

Ecological Cohousing Project; Forge Bank, Halton



Work Stage D Planning Application



Forge Bank, Lancaster

Other UK projects:

- OWCH
 - longstanding group development
 - subject of key reports
 - partnership with RSL sector
 - site in Barnet, North London
- Lilac project, Leeds – mixed tenure, mutual ownership, planning permission
- Cohousing Network groups

Cohousing and "mutual" neighbourhoods

- Promoting opportunities for Cohousing development:
 - Cohousing Network NESTA project
 - New 'loan fund' via Mutual Housing sector
 - 'Intentional neighbourhoods' in 'modular' newbuild
 - Policies for 'mutual' ideas, especially cross-tenure
 - DCLG support for wider 'commissioning' (>CRTB)

Cohousing and "mutual" neighbourhoods

- Concluding remarks / open discussion:
 - ... more than just design....
 - ... more than solely 'mutual'....
 - ... more than simply being neighbourly....

Cohousing and "mutual" neighbourhoods

- *Poem from CLT conference:*

My boy was born today, where will he play?

Will he play indoors on his own, all alone?

Will he play in the road, with the cars?

Will he play in the park, far away?

Let us get rid of the cars.

Let us know our neighbours.

Let us build a community together.

Let us talk in the streets, with no cars.

Let the children play.

Let the adults play.

Let the old people play.

Let the children play.

[R.Delorenzi, June 2010]